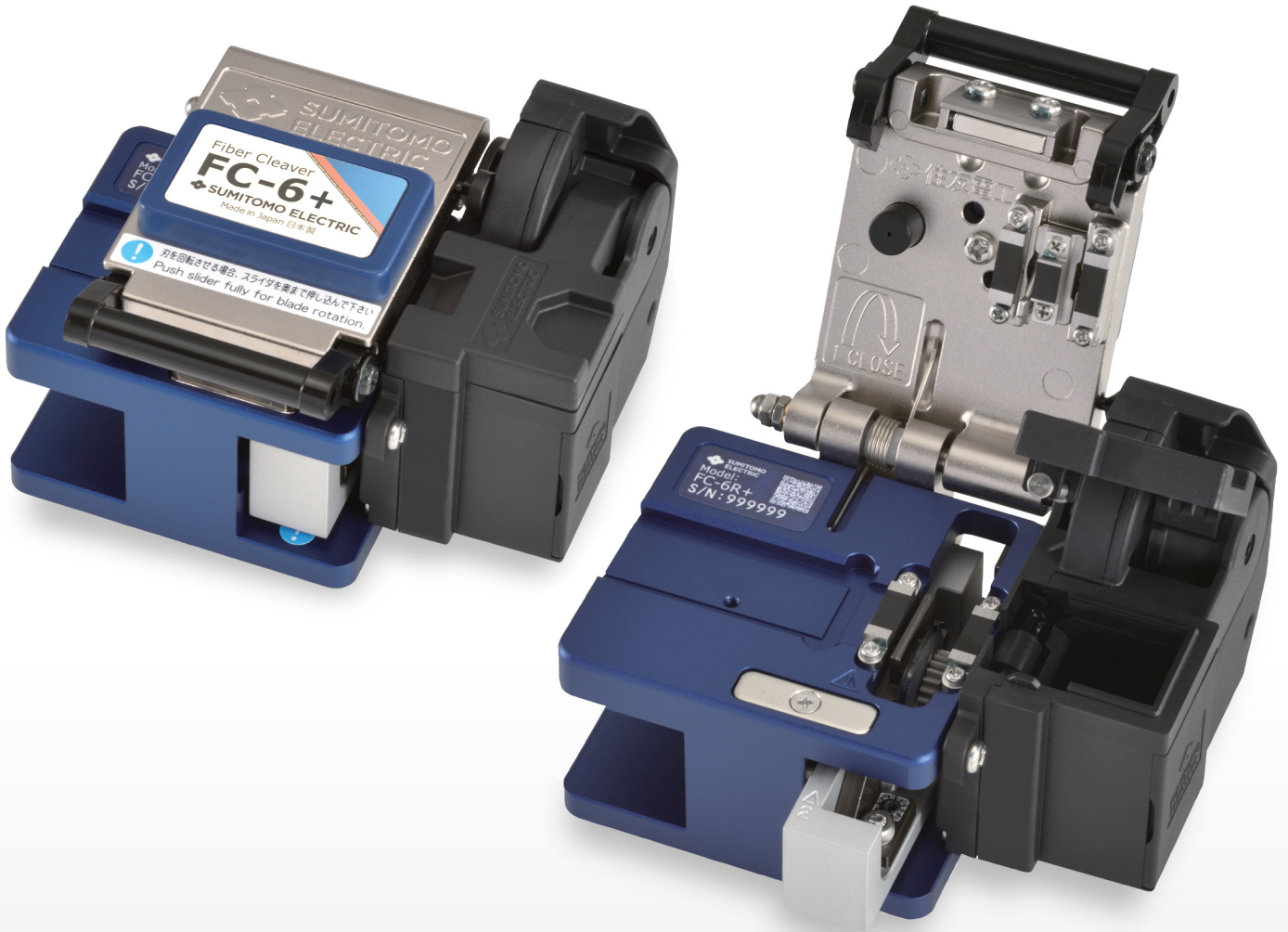




High precision benchtop cleaver

# FC-6+ series



## Fast. Precise. Robust.

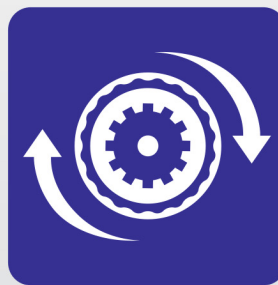
The perfect tool for your cleaving needs



One-action



Accurate



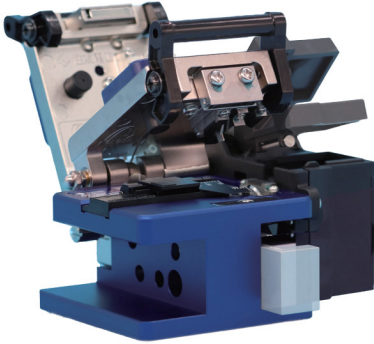
Auto-rotation



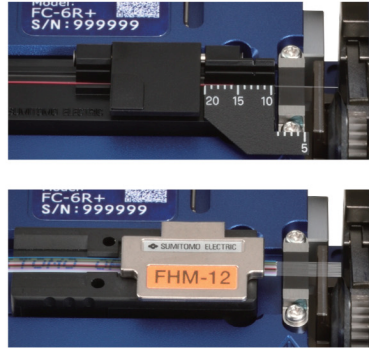
Long-life

# Features

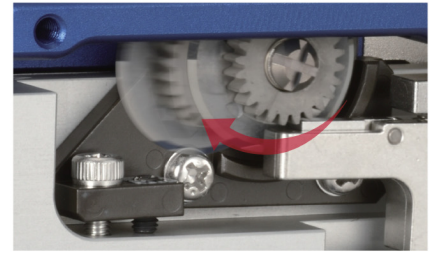
One-action cleaver for seamless operation



Compatible with single-fibre adapter and universal fibre holders



Auto-rotating blade for stable cleaving



## Specifications

		FC-6R+	FC-6C+	FC-6S+
<b>Features</b>				
One-action cleave		✓	✓	✓
Single and ribbon fibre		✓	✓	no
Automatic blade rotation		✓	no	no
<b>Details</b>				
Applicable fibre	Material	Silica glass		
	Cladding diameter	Φ 125 μm		
	Fibre count	Single to 12-fibre ribbon		Single fibre
Single fibre adapter		Pre-fitted (AP-FC6M)		Pre-fitted (AP-FC6SA)
Cleave length		5-20 mm (Φ 0.25) / 10-20 mm (Φ 0.9) / 10mm (Ribbon)		5-20 mm (Φ 0.25)/10-20 mm (Φ 0.9)
Cleave angle (Typical)		0.5 degrees		
Off-cut collector		Automatic (CU-FC6+)		Simple (FB-FC6SA)
Dimensions (W x D x H)		100 × 81 × 63mm		93 × 76 × 63mm
Weight		440g	430g	390g
Spare blade (Field replaceable)		FCP-20BL(7R)		FCP-20BL
Blade life <sup>*1</sup>		60,000 fibres (2,500 fibres × 24 positions)		54,000 fibres (2,250 fibres × 24 positions)

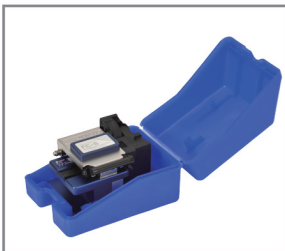
\*1: Blade life is not guaranteed. It may vary depending on the operating environment.

## Standard package

Part name	Part No.	FC-6R+	FC-6C+	FC-6S+
Main body	FC-6R+	1pc	-	-
	FC-6C+	-	1pc	-
	FC-6S+	-	-	1pc
Carrying case	CC-6H	1pc	1pc	1pc
Single fibre adapter	AP-FC6M	1pc	1pc	-
	AP-FC6SA	-	-	1pc
Off-cut collector	CU-FC6+	1pc	1pc	-
	FB-FC6SA	-	-	1pc

## Optional accessories and consumables

Part name	Part No.	Note
Carrying case	-	
Single fibre adapter	AP-FC6M	for Φ 250, 900μm fibre
	AP-FC6SA	for Φ 250, 900μm fibre and drop cable
Off-cut collector	CU-FC6+	
	FB-FC6SA	
Replacement blade	FCP-20BL(7R)	for FC-6R+
	FCP-20BL	for FC-6C+, FC-6S+



Carrying case



AP-FC6M

Single fibre adapter



CU-FC6+

FB-FC6SA

Off-cut collector



FCP-20BL(7R)

FCP-20BL

Replacement blade

 Sumitomo Electric Industries, Ltd.