



OPTIX CHAMBER SYSTEM

Composite Infrastructure Solution



OptoPro

OptoPro ApS
Nørrelundvej 8b
DK- 2730 Herlev

Phone: + 45 7020 4939
Mail: info@optopro.dk
Web: www.optopro.dk

CONNECT
PROTECT

FIBER OPTIC NETWORK



OPTIX CHAMBER SYSTEM

Composite Infrastructure Solution

How it works

Optix Chamber System will protect and connect your fiber networks. The chamber system is manufactured of innovated fiberglass reinforced composite material, with advantages of strong, lightweight and corrosion-resistance. Structurally, the chamber is designed with 600mm and 300mm height section walls, knock-down delivery and modularly set up with wanted depth. Walls are connected with special kit, making the assembling of Optix Chamber System a "bolt-free" work, easy and highly efficient.

Diversity of Sizes

Optix Chamber System has a full range of sizes that are available for most of the market needs in the Telecom and Electricity industry, from 450mm to 1500mm both at width and length. Standard height are 600mm and 300mm, which are flexible to stack up forming 900mm and 1200mm height and so on.

Upgraded Structure Design

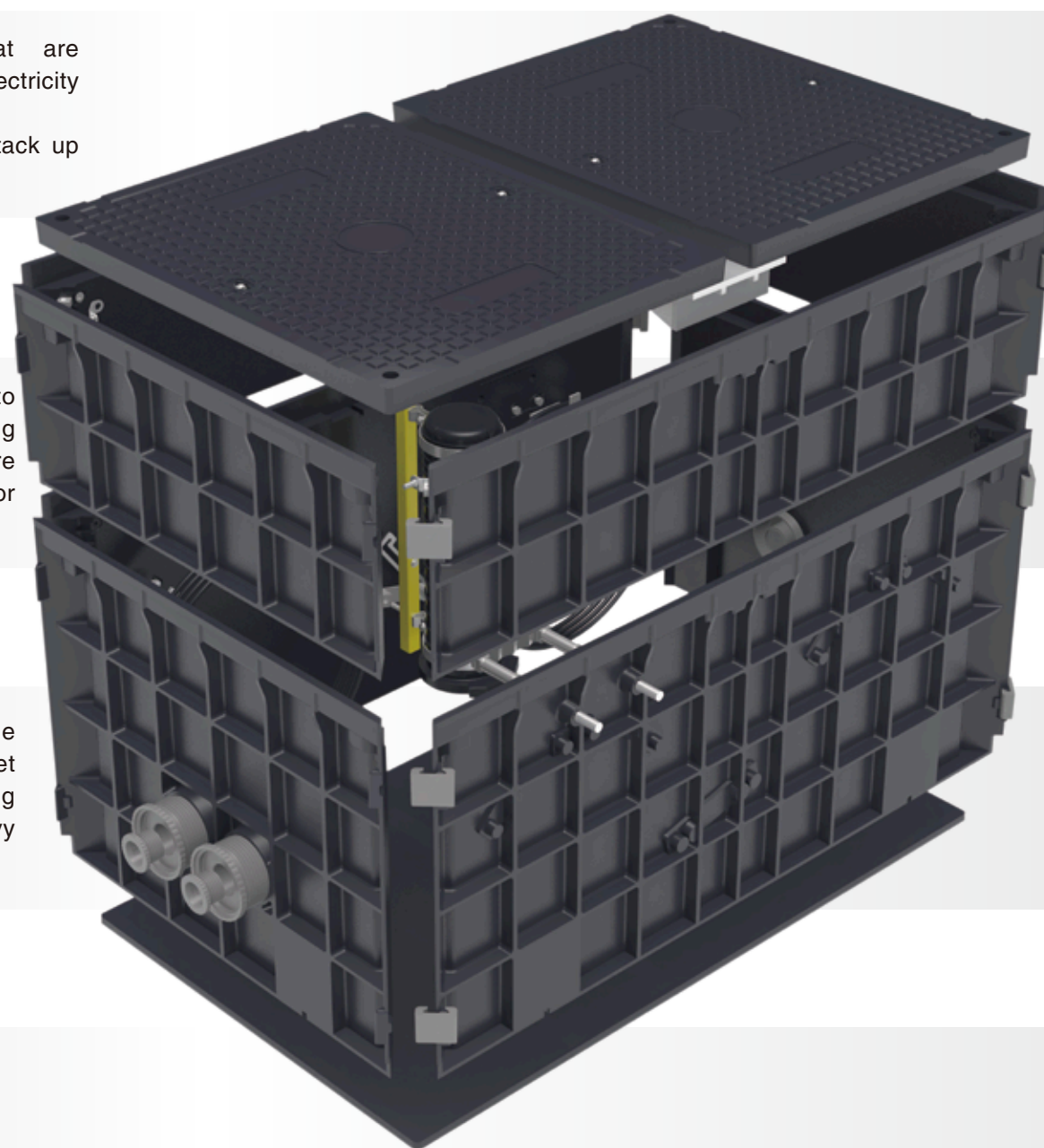
The sidewall Beam-Structure reinforces and locks the chamber into the ground, making it much stronger once installed and supporting the load bearing better. The flat and smooth inside sidewall structure increases valid internal working space, easily to hang closure or freely store more cable loop inside.

Superior Strength

Composite SMC material guarantees the high strength of the chamber. Composite cover on the Optix Chamber System can meet the load bearing capacity up to D400 acc. to En124 and is strong enough to be used in all kinds of environments with passing heavy vehicles.

Customized services

Any color is available for customized logo and cover pattern or marking; customized knock-out entry for ducts.



PRODUCT BENEFITS

Lightweight

The Optix Chamber System single wall is light enough for one person to easily lift during installation, 90% lighter than concrete of same size, yet strong enough for vehicle traffic; 90% more efficient than concrete pouring on site; which makes the Optix Chamber System the preferred brand to major projects.

SMC Material Construction

The SMC material is resistant to temperature fluctuations, anti-corrosion, non-conductive, transparent to radio waves, environment protective and with no recycle value to avoid scrap theft.

Reduced Cost

Compared to conventional alternatives, Optix Chamber System is faster and easier to assemble and install with knock-down panel and bolt-free design, with no large lifting equipment needed, saving time and cost.

Duct Entries Knocked-out

Duct entries can be easily knocked out at any designed sidewall point on site.

How to set up

Step1

Connect one short wall to the long wall vertically with two fastclips at the connected angle.



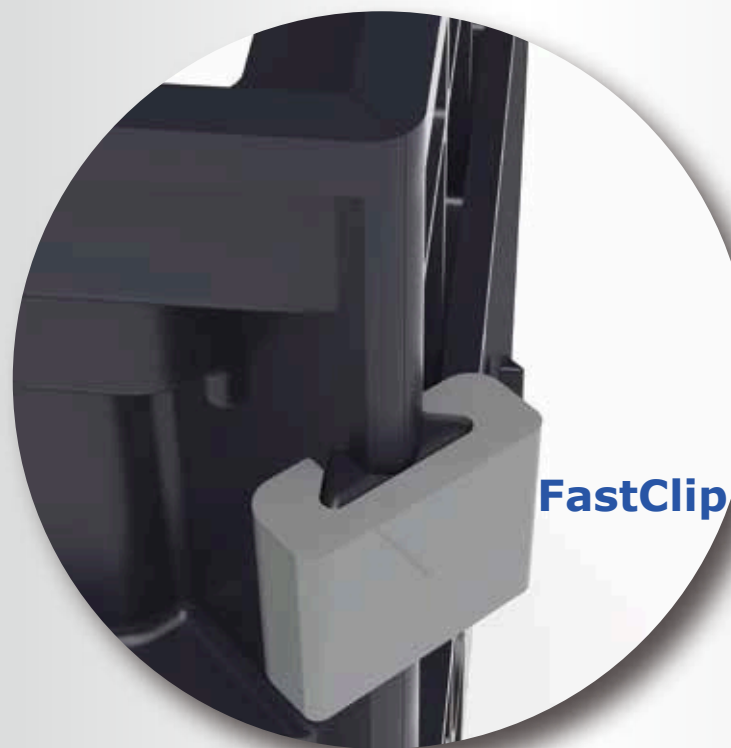
Step2

Connect another short wall to the other side of the long wall with two fastclips, same as step 1.



BOLT-FREE

Drop-in composite covers are supplied in Optix Chamber System, both available for B125 or D400 according to EN124.



FastClip

Optix Chamber System can be easily and rapidly set up on site, without the help of a big crane.

It is formed with four walls and connected with ultra-strong FastClip at each angle of two walls.

If a deeper chamber is required, then a RiserWall is optional by setting up 4 additional walls with same procedure, and stack on the 1st chamber section.

Step3

Now connect with the last long wall, then lay out the first chamber section to ensure you have fixed all connected four walls.



Step4

Stack the second chamber section on top of the first section and knock each other heavily into the four corners until they are tightly matched, so you have the desired height.



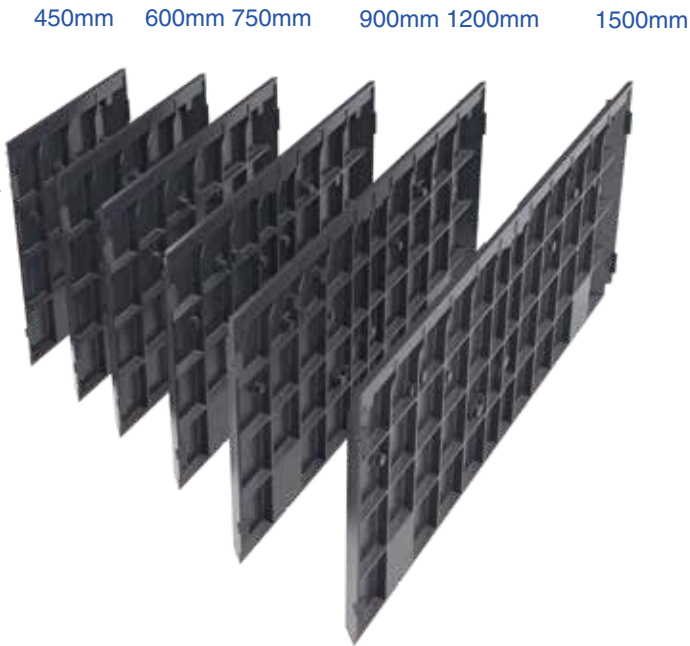


Measuring a Chamber

Modular and Scalable

The Length & Width of the multipal walls are available with size 450, 600, 750, 900, 1200 and 1500 respectively.

Wide range of assemble parts making Optix Chamber System adapting most of the underground access needs, from 450mm x 450mm to 1500mm x 1500mm. Flat type walls package is convenient to deliver to the field in any quantity.

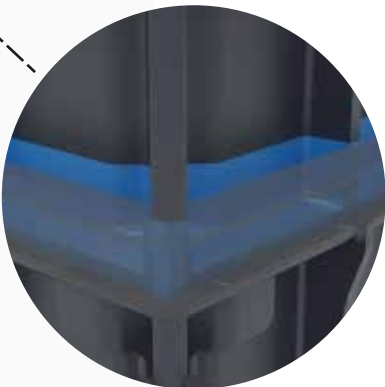


Veritically, Height of panel are availabe with 300 and 600mm, which can stack up freely.



Just DROP-IN!

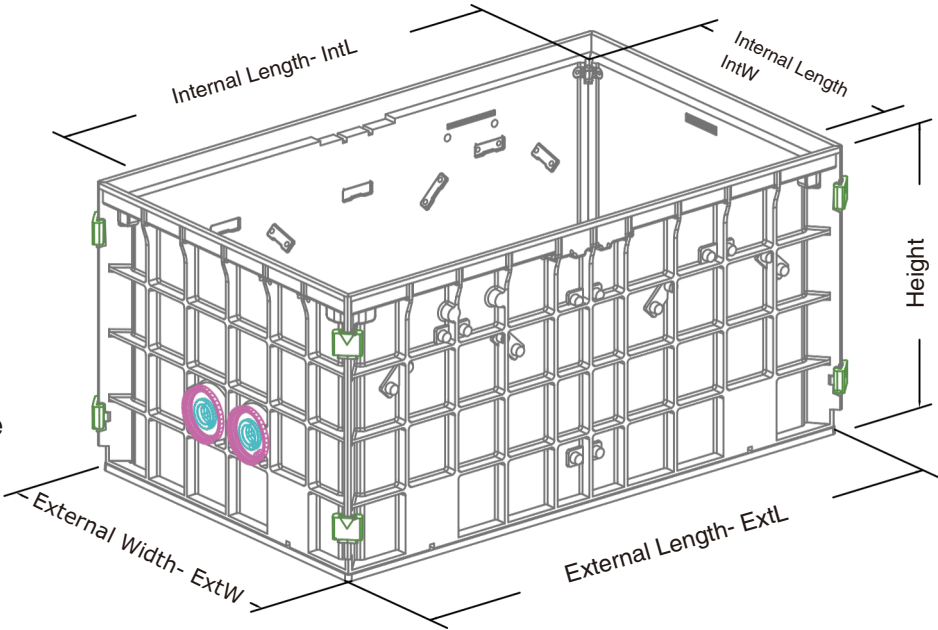
Special tightening design for the connection of 1st section and 2nd section, no extra accessories required. Just Drop-In and finish.



OPTIX CHAMBER SYSTEM

Composite Infrastructure Solution

Network access chamber sections are measured by the measurement taking from inside of the chamber. Attention should also be paid to the external dimensions when deciding whether the network access chamber will fit into the area required.



Specification

Unit:mm

Clear Opening		External Size		Cover	
IntW	IntL	EtW	EtL	Cover QTY	Load
450	450	540	540	#1	B125/D400 EN124-5:2015
450	600	540	690	#1	
450	750	540	840	#1	
450	900	540	1050	#2	
450	1200	540	1350	#2	
450	1500	540	1650	#2	
600	600	690	690	#1	
600	750	690	840	#1	
600	900	690	1050	#2	
600	1200	690	1350	#2	
600	1500	690	1650	#2	
750	750	840	840	#1	
750	900	840	1050	#2	
750	1200	840	1350	#2	
750	1500	840	1650	#2	
900	900	1050	1050	#2	
900	1200	1050	1350	#2	
900	1500	1050	1650	#2	
1200	1200	1350	1350	#2	
1200	1500	1350	1650	#2	
1500	1500	1650	1650	#2	
Height 300/600/900/1200mm available					

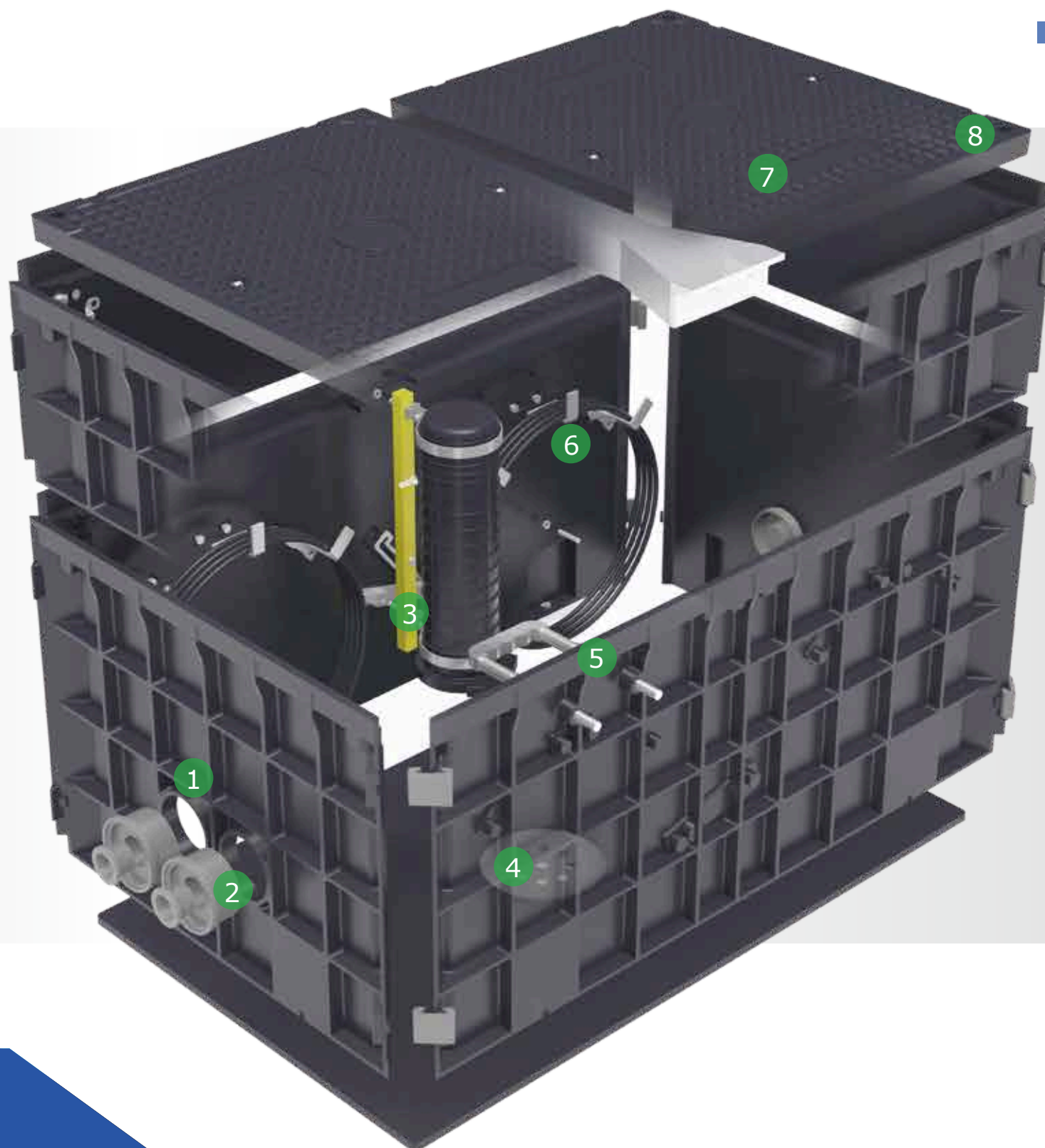
Chamber Accessories

Optix Chamber System is designed for cable underground network access, with internal room to storage slack cable or splicing closures. Inside the walls, brackets for holding above parts are reserved which can easily set up on site.

ACCESSORIES DETAILS

Accessory Details

- [1] Knock-out duct entry and duct reducer.
- [2] Duct sealing available.
- [3] Holder for storage of closure.
- [4] Optional chamber base with drainage hole.
- [5] Ladder available for deep chamber, easy & safe access.
- [6] Slack cable bracket allows 20m to 30m cable loop to hang on the inside of the wall.
- [7] Customer marking available.
- [8] Anti-theft locking system for cover.



Customer Anti-theft lock



Customer marking available

